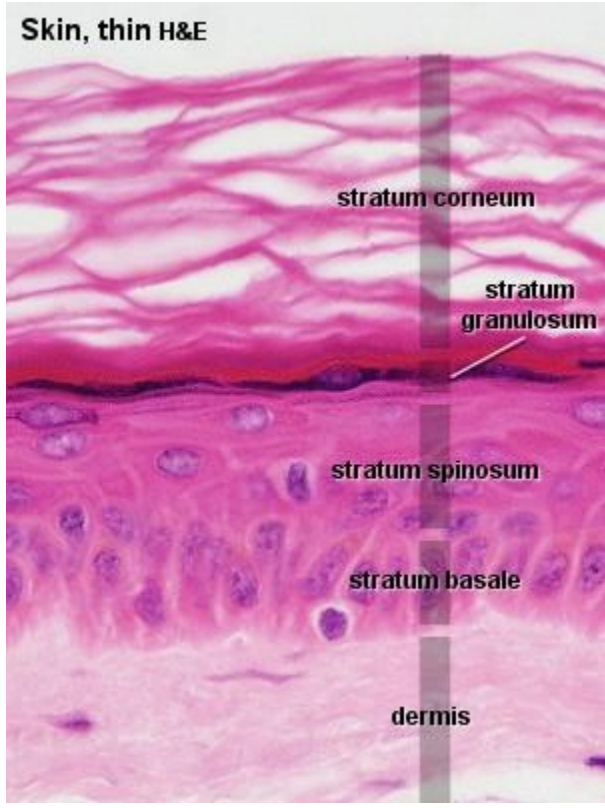
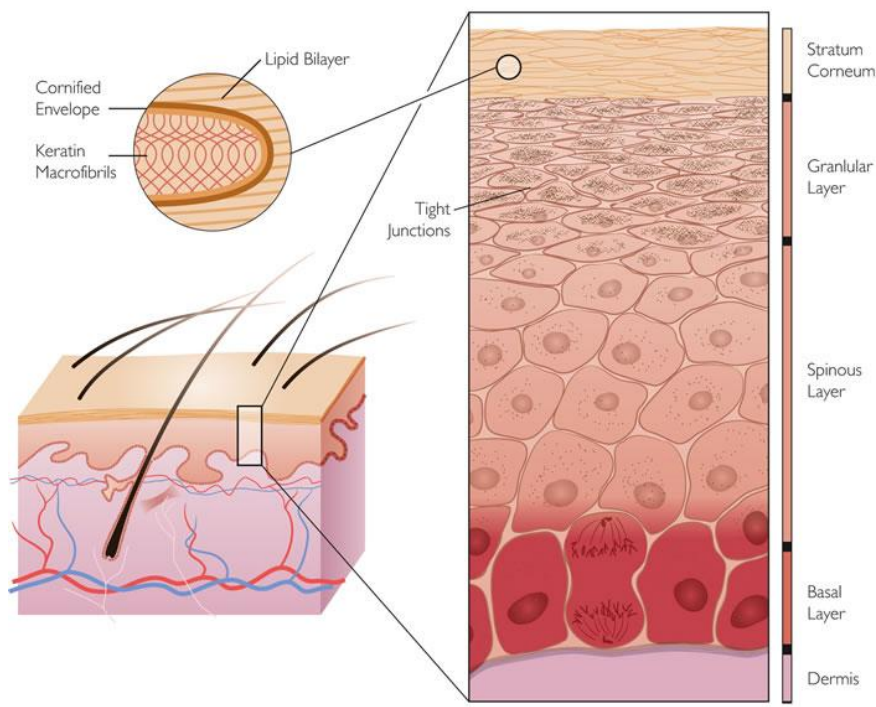


What cells really look like

Draw each cell on your paper and answer the questions.

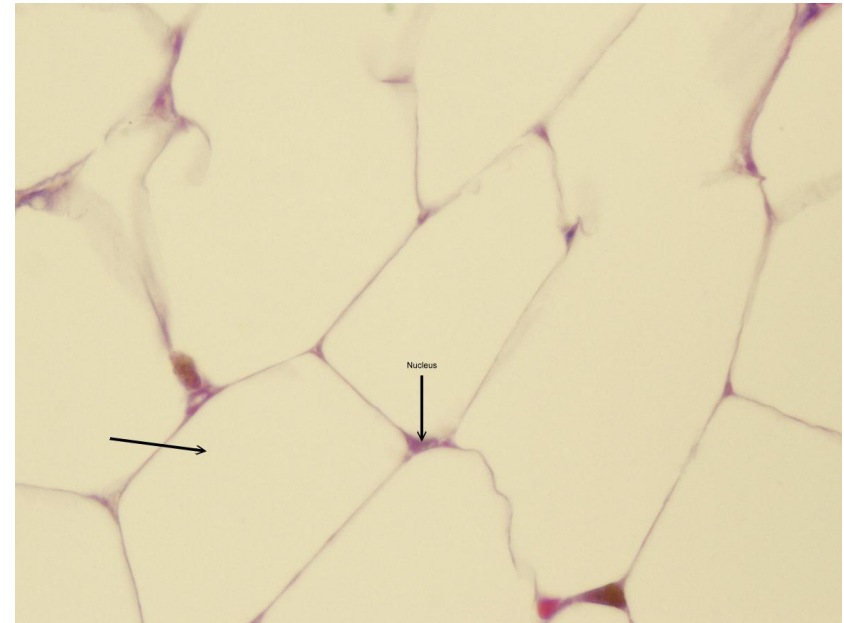
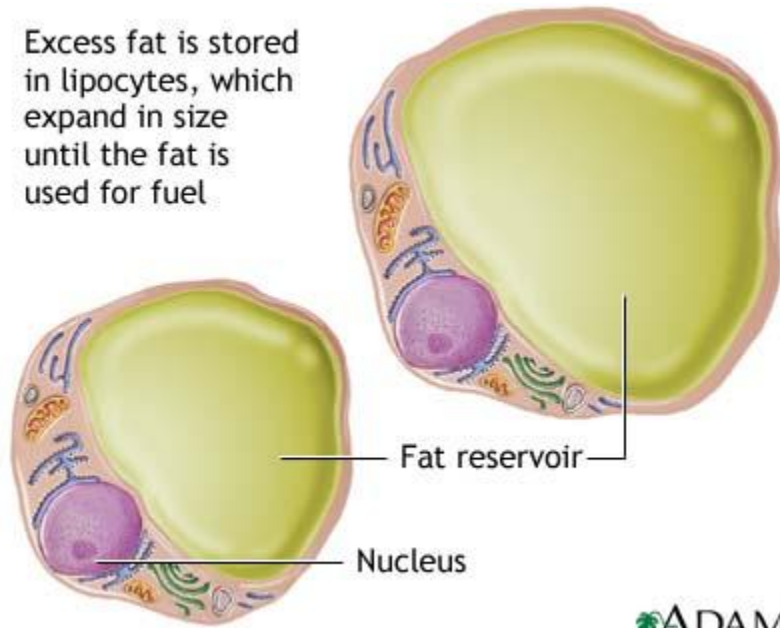
Skins cells

Cells that don't have access to blood will die.

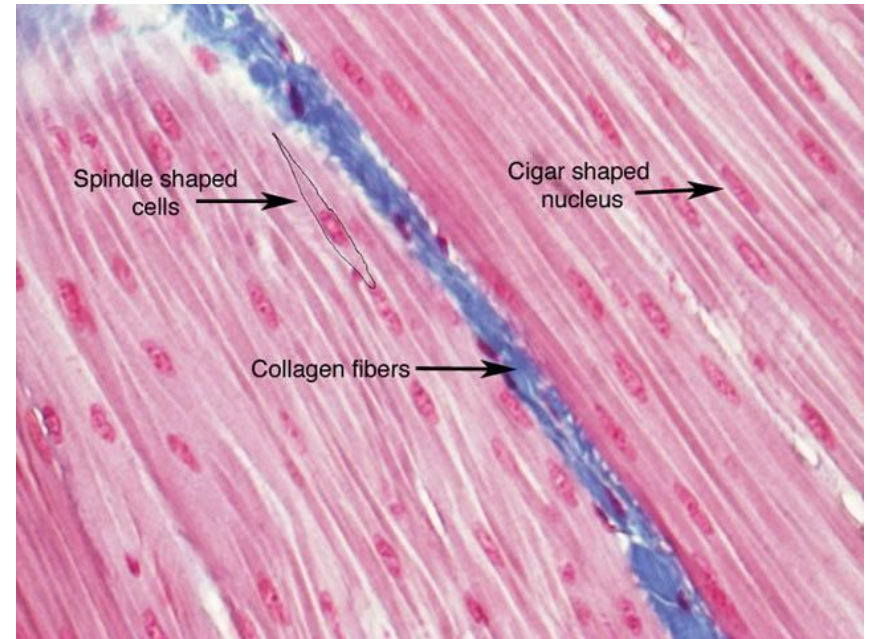
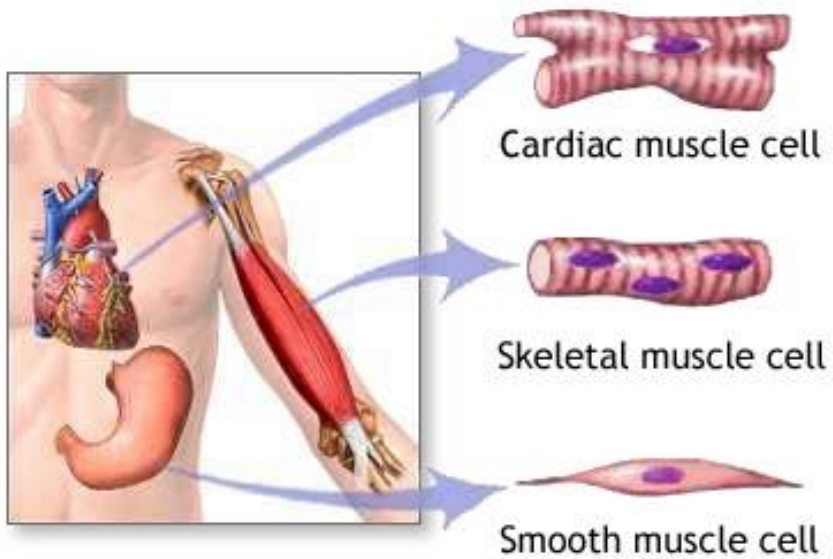


Fat Cells

Excess fat is stored in lipocytes, which expand in size until the fat is used for fuel



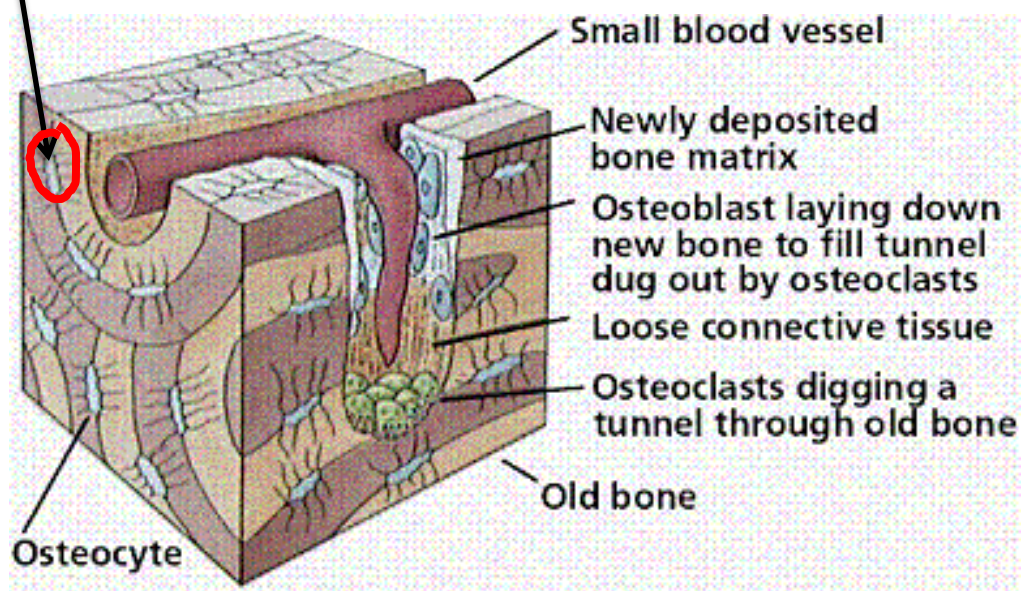
Muscle cells



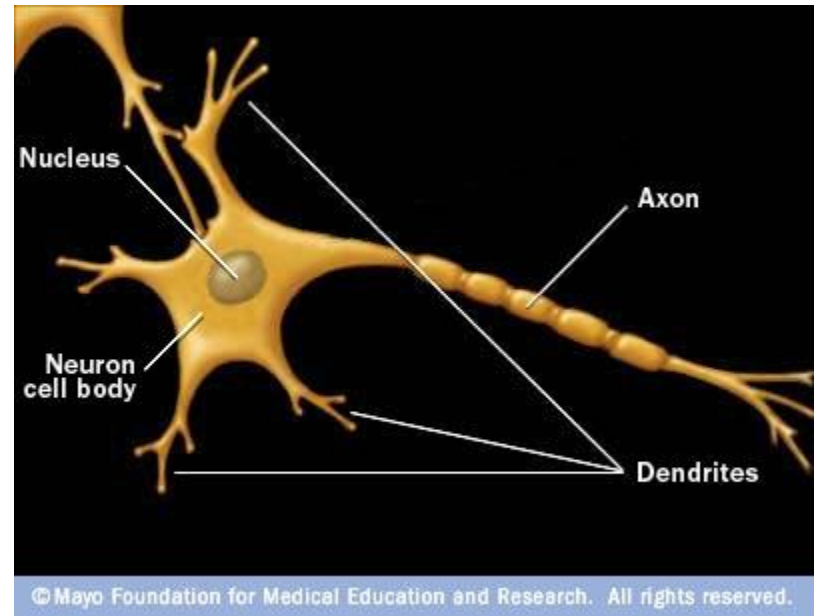
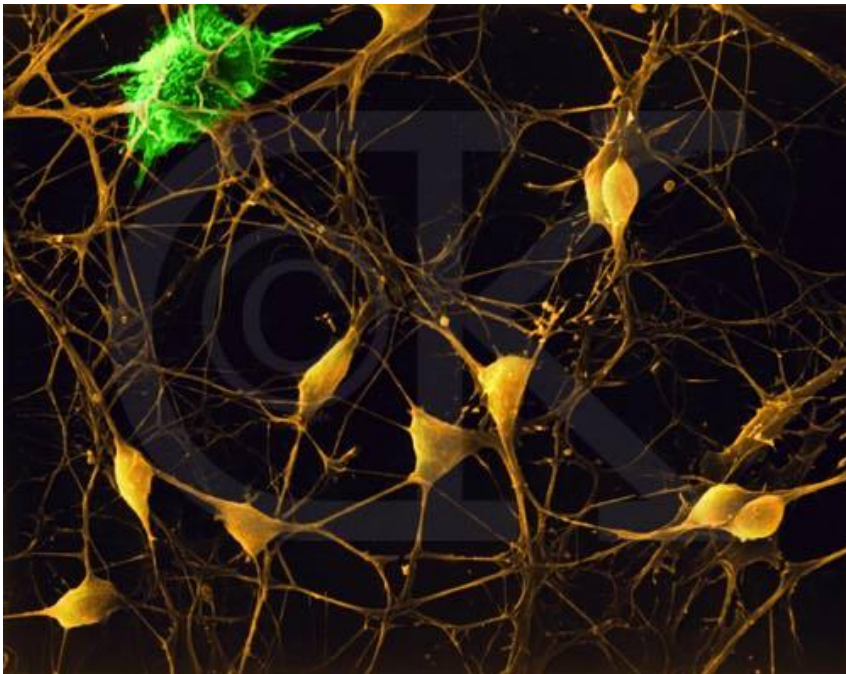
Bone cells



Bone cells



Nerve Cells

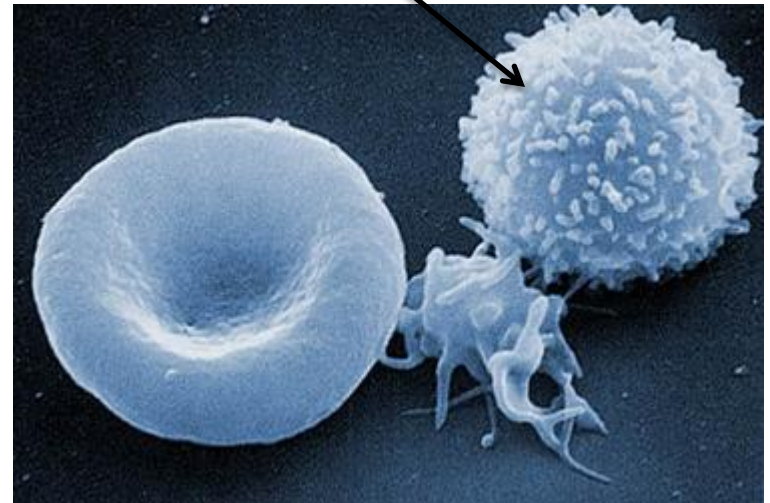


Blood cells

Red blood cells



White blood cell



Cartilage Cells

The little black dots are cells

